

ST. NICHOLAS COSTUME

GENERAL INFORMATION

FABRIC REQUIRED

Cape, capelet, stole and miter: 9 2/3 yards, 45-inch fabric
patterned or napped fabric requires additional fabric
Lining for cape, capelet and miter: 8 1/4 yards, 45-inch fabric
Alb: 5 1/2 yards, 54-inch fabric
Interfacing for cape and capelet: 2 3/4 yards *medium or heavy weight*
Interfacing for stole: 1 3/4 yards *light or medium weight*
Interfacing for miter: 1-1/2 yards white buckram, 20" wide



NOTIONS

Cape, Capelet, Stole and Miter

3 1/2 yards gold braid/trim, *more if using multiple rows*
2 large hook and eye closures

Alb

Lace, *as desired for sleeves and body (model used 8 yards heavy lace 2 1/2, inches wide)*
2 packages seam binding
22-24-inch zipper

SIZE

Pattern is extra-large, other sizes need adjustment; suggestions are on the pattern piece sheets.

PATTERN PIECES

- | | |
|--|--|
| 1. Alb Back | 13. Capelet Back |
| 2. Alb Front | 14. Capelet Front Lining |
| 3. Alb Front Facing | 15. Capelet Back Lining |
| 4. Alb Back Facing | 16. Capelet Back Facing and Interfacing |
| 5. Alb Sleeve | 17. Capelet Front Facing and Interfacing |
| 6. Stole and Interfacing | 18. Cape Front |
| 7. Miter Front and Back | 19. Cape Front Facing and Interfacing |
| 8. Miter Interfacing/stiffening
(Buckram) | 20. Cape Back |
| 9. Top of Miter Lining | 21. Cape Back Facing and Interfacing |
| 10. Miter Bottom Lining | 22. Cape Front Lining |
| 11. Miter Tab/tail | 23. Cape Back Lining |
| 12. Capelet Front | |



ENLARGING THE PATTERN

One square on the pattern graph equals one-and-one-half-inches for an extra-large pattern; adjust as suggested for smaller sizes.

Draw enlarged pattern on lightweight non-woven interfacing, butcher paper, or brown wrapping paper

Material may need to be pieced for the big cape pieces

How to transfer the pattern

1) Overhead projector with transparencies

Print pattern pieces on transparency film

Use transparency film made for your printer type

Print pattern on transparencies

or print on plain paper and make transparencies with a copier

or by tracing (tracing will require transferring the grid, as well, and is not recommended)

Tape non-woven interfacing or paper to wall

Project image so squares measure 1 1/8–1 1/2-inches, depending on size needed

Check to see that square size is consistent for each transparency

Draw pattern pieces on interfacing or paper

A set of seven printed transparencies is also available from the St. Nicholas

Center

2) Draw 1 1/2-inch grid on paper or interfacing

A fine point black marker works well

Copy pattern pieces by marking where the lines cross the grid lines

Complete pattern by drawing lines inside the squares

CUTTING LAYOUTS

Cape, capelet, stole and miter

Lining for cape, capelet and miter

Alb

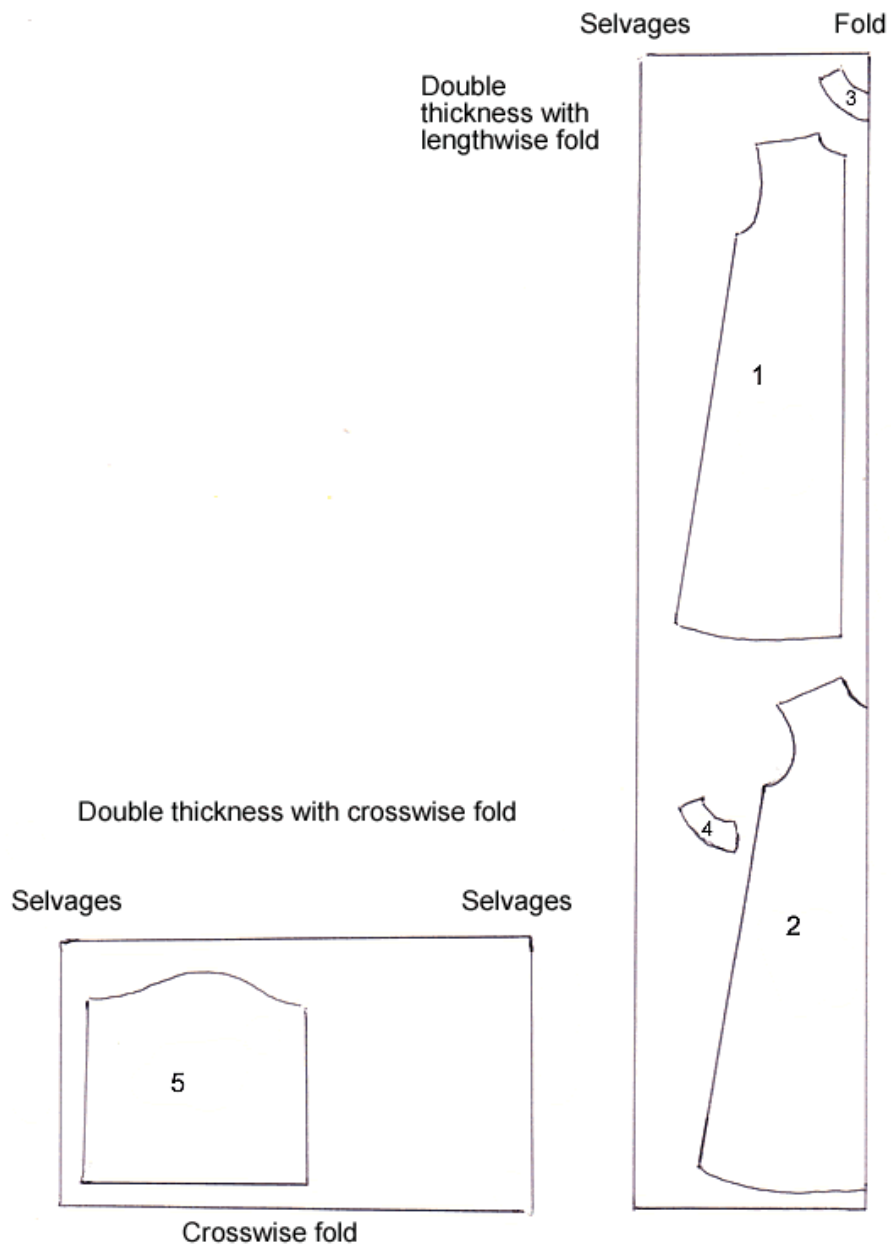
Check length of alb and cloak/cape before cutting in case adjustments need to be made to fit your person. It is also a good idea to check the pattern pieces for size before cutting fabric (this is especially easy to do if the pattern has been enlarged on non-woven interfacing).

Using patterned or napped fabric requires additional fabric. Lay out the enlarged pattern pieces to determine the amount. If you wish to line the stole and miter tabs instead of self-facing, more lining material will be needed.

ST. NICHOLAS COSTUME CUTTING LAYOUTS

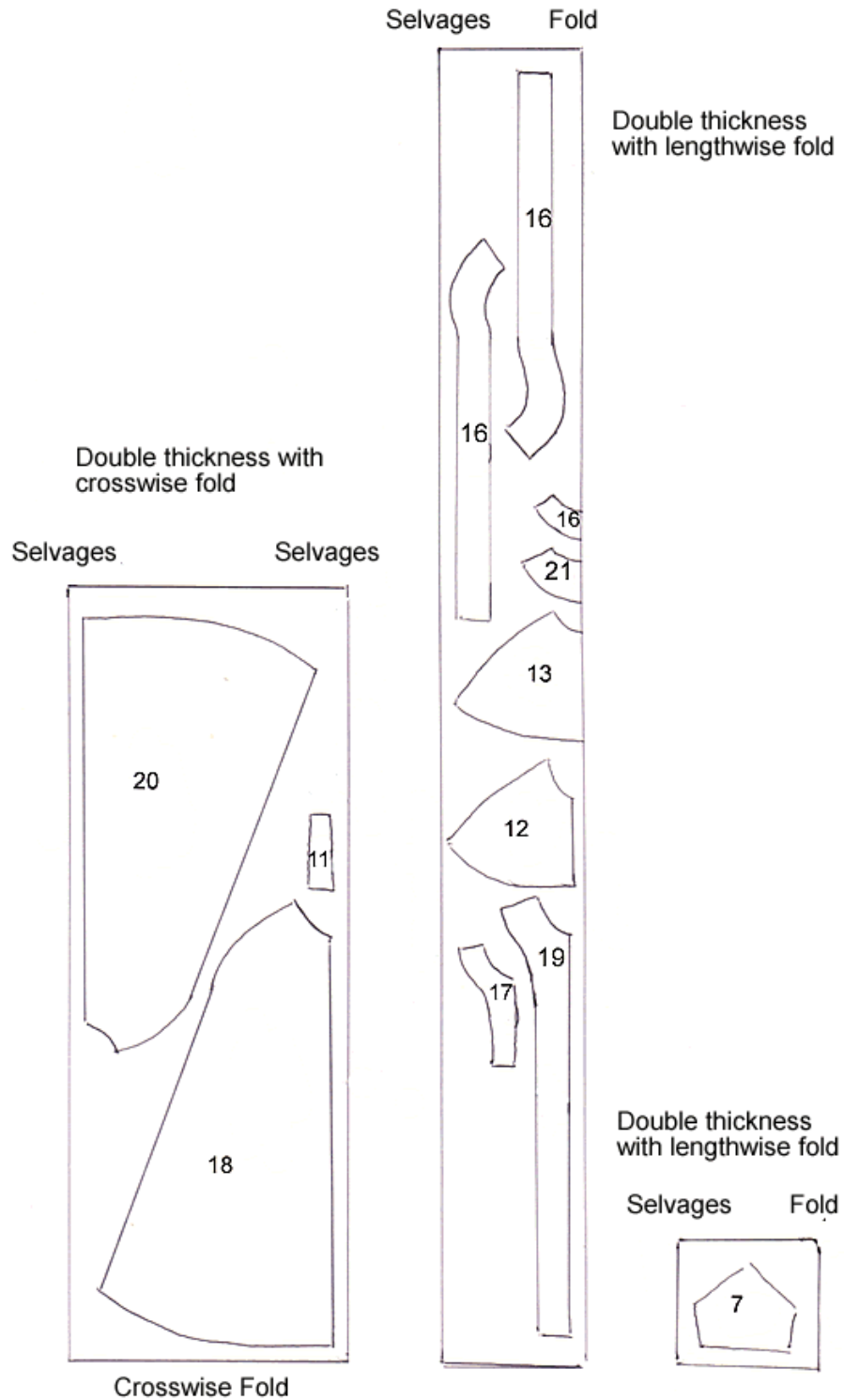
Three cutting layouts: Alb
 Cloak/cape, capelet, stole, miter
 Lining for cloak/cape, capelet, miter
Interfacing also needs to be cut, layout not provided

ALB CUTTING LAYOUT — 5 ½ YARDS



ST. NICHOLAS COSTUME CUTTING LAYOUTS

CLOAK/CAPE, CAPELET, STOLE & MITER CUTTING LAYOUT — 9 3/4 YARDS

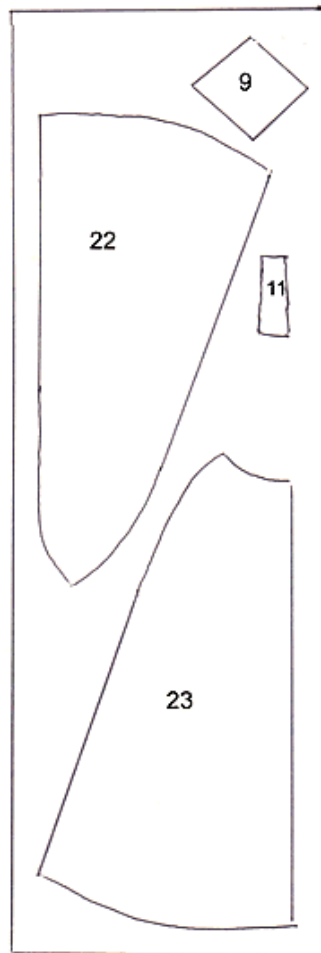


ST. NICHOLAS COSTUME CUTTING LAYOUTS

LINING CUTTING LAYOUT FOR CLOAK/CAPE, CAPELET & MITER — 8 1/4 YARDS

Double thickness with
crosswise fold

Selvages Selvages



Crosswise fold

Double thickness
with lengthwise
fold

Selvages Fold



ST. NICHOLAS CLOAK OR CAPE

FABRIC REQUIRED

6-3/4 yards, 45-inch fabric

patterned or napped fabric will require more yardage

6 yards, 45-inch lining fabric

2 yards interfacing *medium weight or heavy weight*

Seam binding for hem, if desired

PATTERN PIECES

Cape Front, piece #18, cut 2

Cape Front Facing, piece #19, cut 2

Cape Front Interfacing, piece #19, cut 1

Cape Back, piece #20, cut 2

Cape Back Facing, piece #21, cut 1 *on fold*

Cape Back Interfacing, piece #21, cut 1 *on fold*

Cape Front Lining, piece #22, cut 2

Cape Back Lining, piece #23, cut 2



Seam allowances 5/8 – 3/4-inch

Secure all seams at beginning and end

CLOAK OR CAPE SEWING INSTRUCTIONS

1. Pin and stitch Cape Back (#20) center back seam **RIGHT SIDES TOGETHER**.
Press seam open.
2. Pin and stitch Cape Front (#18) to cape back at side seams **RIGHT SIDES TOGETHER**.
Press seams open.
3. Stitch Front Facing (#19) to Back Facing (#21) at shoulder seams **RIGHT SIDES TOGETHER**.
Press seams open.
Repeat for front and back interfacing.
4. Pin interfacing to **WRONG SIDE** of facing.
Stitch 1/4-inch from all outer edges.
Trim seam allowance of interfacing only.

5. Pin facing to cape RIGHT SIDES of facing and cape TOGETHER.
Stitch.
Clip and trim seam.
Turn and press along the seamed edge.
Top stitch 1/4-inch from neck edge to secure facing in place.
6. Measure and mark hem.
Trim hem to no more than 1-1/4-inch.
Slip stitch hem of cape, using seam binding, if hem seems thick.
7. Stitch cape lining center back seam. (As in #1 for cape, above)
Stitch cape lining fronts to back at side seams (as in #2 for cape)
Press seams open.
8. Pin lining to RIGHT SIDE of facing and interfacing, easing curves.
Stitch, easing in curves.
Begin stitching and end at top of cape hem.
Clip seams.
Press along seam line, keeping facing seam allowance flat.
9. Hem lining so it comes just over the top of cape hem.
10. Hand stitch front facing to cape hem.
11. Top stitch 1/4-inch along front cape edges.
12. Stitch hook and eye on cloak/cape neck front corners.

ST. NICHOLAS CAPELET

FABRIC REQUIRED

1 yard, 45-inch fabric

patterned or napped fabric requires more yardage

1 yard, 45-inch lining fabric

5/8 yard interfacing, *medium or heavy weight*

2 3/4 yards gold braid or other trim



PATTERN PIECES

Capelet Front, piece #12, cut 2

Capelet Back, piece #13, cut 1 *on fold*

Capelet Front Facing, piece #17, cut 2

Capelet Back Facing, piece #16, cut 1 *on fold*

Capelet Front Lining, piece #14, cut 2

Capelet Back Lining, piece #15, cut 1 *on fold*

Capelet Front Interfacing, piece #17, cut 2

Capelet Back Interfacing, piece #16, cut 1 *on fold*

Seam allowances 5/8–e/4-inch

Secure all seams at beginning and end

CAPELET SEWING INSTRUCTIONS

1. Pin and stitch Capelet Front (#12) to Capelet Back (#13) RIGHT SIDES TOGETHER at side seam.
Repeat for other side.
Press seams open.
2. Stitch Front Facing (#17) to Back Facing (#16) at shoulder seams RIGHT SIDES TOGETHER.
Repeat for other side.
Repeat for front and back interfacing.
Press seams open.
3. Pin interfacing to WRONG SIDE of facing.
Stitch 1/4-inch from all outer edges.
Trim seam allowance of interfacing only.
4. Pin interfacing to capelet RIGHT SIDES of facing and capelet TOGETHER on

front edges and neck.

Stitch front edges down 9-inches from neck, then turn and stitch on seam line of facing, *when turned this forms the hem at the front.*

Clip and trim seam.

Turn and press outer edge.

5. Pin bottom hem of capelet starting at facing turn back.
Hem should be about 1-inch with 1/4-inch turned under. Trim any excess fabric.
Press.
Use seam binding if seam seems thick.
Slip stitch or overcast hem in place.
6. Stitch capelet lining fronts to back at side seams (as in #1 for capelet).
Press seams open.
7. Pin lining to RIGHT SIDES of facing and interfacing, easing curves.
Stitch, easing in curves. Begin stitching and end at top of capelet hem.
Clip seams.
Press along seam line, keeping facing seam allowance flat.
7. Hem lining so it comes just over the top of capelet hem.
Turn facing under so it is even with capelet hem; slip stitch or overcast bottom edge of capelet hem and facing hem together.
8. Top stitch 1/4-inch from neck edge.
9. Hand or machine stitch, whichever works and looks better, gold trim down front and/or around bottom edge.
10. Stitch hook and eye on capelet neck front corners.

ST. NICHOLAS MITER

FABRIC REQUIRED

Miter: 3/4 yard, 45-inch fabric *adjust, if needed, for repeat*

Lining: 3/4 yard, 45-inch fabric

Interfacing: 1-1/2 yard white buckram, 20-inch

Trim: gold braid, trim, or rick rack, each vertical piece needs to be 14 inches

PATTERN PIECES

Miter, piece #7, cut 2

Interfacing (stiffening), piece #8, cut 4

Draw a pencil line around pattern piece; then cut pieces out

Miter Top Lining, piece #9, cut 1

Miter Bottom Lining, piece #10, cut 2

Tabs, piece #11, cut 4 (or cut 2 and 2 lining)

Seam allowances 5/8–3/4-inch

Secure all seams at beginning and end

Pattern allows for a wig. Miter measures approximately 25 inches around.

Adjust pattern for a different size by trimming the sides of the miter pattern pieces.

MITER SEWING INSTRUCTIONS

Miter

1. Stitch 2 of pieces of buckram interfacing (#8) together by zig-zag stitching around the edges, making one stiff piece. Repeat with the other 2 pieces.
2. Pin one set of buckram to the WRONG SIDE of miter front (#7), leaving 5/8-inch seam allowance all around.
Stitch 3/8-inch from the top edge of the buckram interfacing.
Stitch 3/8-inch from the bottom edge of the buckram interfacing.
Do not sew along the interfacing side seams.
When the 5/8-inch seam allowance is folded over the buckram, the stitching will look like 3/8-inch top stitching. This holds interfacing in place.
3. Repeat for miter back (#7).



4. Trim miter front with gold braid or other selected trim; apply by hand or machine, whichever is most practical and will look the best. Trim miter back, if desired.
5. Pin miter front to miter back at side seams, RIGHT SIDES TOGETHER. Stitch, *do not catch the buckram, stitch right next to it.*
Press seams open.
6. Turn miter right side out.
This may be a little difficult, but turn best you can and it will work.
Smooth and press. Set aside.

Miter Lining

7. Pin Miter Bottom Lining (#10) pieces RIGHT SIDES TOGETHER at side seams. Stitch. Press seams open.
8. Turn under 1/4–3/8-inch on the top edge of the bottom lining. Zig zag stitch. Set aside.

Tabs

9. Pin three edges of tabs (#11) RIGHT SIDES TOGETHER, leaving the top end open so tab will turn to the right side. Stitch.
Trim and clip corner seam allowance before turning.
Turn and press.
Repeat for second tab.

Assemble Miter

10. Pin tabs to center of miter back RIGHT SIDES TOGETHER, matching raw edges, leaving 1/4-inch clear between the two.
Tabs will be pointing to the top of the miter.
This way they will be hanging down after the bottom lining is attached.
11. Pin bottom lining to miter, RIGHT SIDES TOGETHER, matching side seams. Stitch right next to the buckram, *taking care not to catch buckram.*
Turn bottom lining to the inside and press.
Top stitch between the existing top stitching and bottom edge.
This holds the lining firmly in place.
Hand tack the top edge of lining to the inside of the miter at the side seams.
This holds the lining in place.
12. Press seam allowance securely over the top edge of the miter, covering the buckram, all

the way around.

13. Press seam allowance of the Top Miter Lining (#9) all around.

Notice which points match the top of the miter and which points align with the side seams.

With the Top Lining piece seam down, pin lining to miter seam allowance, leaving a slight space between the pressed edges.

Slip stitch (or overcast) together, holding the top miter lining and the miter together.

ST. NICHOLAS ALB

FABRIC REQUIRED

5 ½ yards, 54-inch fabric *look for a nice weave that will have some body and hang well*

Lace or trim, as needed *model used 8 yards, 2 1/2-inches wide, of lace (one row on sleeves, three on alb body)*



NOTIONS

2 packages seam binding

22-24-inch zipper

PATTERN PIECES

Alb Back, piece #1, cut 2

Alb Front, piece #2, cut 1 on fold

Alb Front Facing, piece #3, cut 1 on fold

Alb Back Facing, piece #4, cut 2

Alb Sleeve, piece #5, cut 2

Seam allowance: 5/8–3/4- inch

Secure all seams at beginning and end

ALB SEWING INSTRUCTIONS

1. Measure zipper length against Alb Back (#1) center seam to mark where to begin stitching the center back seam.
Stitch center back seam. Press open.
2. Insert zipper, following package instructions.
The top zipper teeth should be at the level of the neck seam allowance.
Press.
3. Stitch Alb Front (#2) to Alb Back (#1) at shoulder seams RIGHT SIDES together.
Press seams open.
4. Stitch front facing (#3) to back facing (#4) at shoulder seams RIGHT SIDES TOGETHER.
Press seams open.
5. Pin neck facing to alb RIGHT SIDES TOGETHER.

Fold center back facing seam allowance out of the zipper's way before stitching.
Stitch facing and alb neck seam.
Turn and press. Hand stitch facing seam allowance in place at zipper opening so it won't interfere with the zipper.

6. Top stitch top 1/4-inch from alb neck edge on RIGHT SIDE.
This keeps facing in place.
7. Stitch lace on sleeve (#5), if desired.
Determine hem width before deciding on trim placement.
Model has one row of lace, with the lower edge 2 3/8-inches above hem.
Stitch seam binding to at bottom edge of sleeve.
8. Pin sleeve to alb front and back RIGHT SIDES TOGETHER.
Stitch. Repeat for other sleeve.
Clip seams and press toward sleeve.
9. Pin side and underarm seams RIGHT SIDES TOGETHER.
Stitch, leaving an area open in side body seams for a convenience opening to allow access to trouser pockets.
Press seams open.
10. At each side of openings, fold seam allowance under, making a 1/4-inch hem.
Hand stitch in place.
Make a bar tack at top and bottom of opening to secure seam.
11. Pin hem in place. A 2- or 3-inch hem is sufficient. Cut off excess material, if any.
Stitch seam binding on raw edge; slip stitch hem.
12. Lace on the model was stitched on after the alb was finished.
Model has three rows of lace, the lower edge of the bottom row is 7 inches up from the bottom of the garment
Stitch starting at the center back.
Turn under ends of lace at the center back and stitch folded edges together for each layer of lace.

ST. NICHOLAS STOLE

FABRIC REQUIRED

1 3/8 yards, 45-inch fabric, *adjust, if needed, for repeat*

1 3/4 yards interfacing, *light or medium weight*

Gold trim, *as desired*

PATTERN PIECES

Stole, piece #6, cut 2 or 4 if self-facing

Stole Lining, piece #6, cut 2 if using lining fabric

Stole Interfacing, piece #6, cut 2

Seam allowances 5/8" – 3/4"

Secure all seams at beginning and end

STOLE SEWING INSTRUCTIONS

1. Decide placement for gold trim. Stitch in place by hand or machine.
The model has gold trim placed 5-1/2 to 5-3/4-inches from bottom edge, including seam allowance.
2. Place interfacing on the WRONG SIDE of the stole pieces (#6).
Pin stole piece to lining piece (either same or lining fabric) RIGHT SIDES TOGETHER.
Stitch leaving top (center back seam) open. *This is the two long sides and across the bottom.* Repeat for second stole piece..
3. Trim, layering seam and clip corners.
Turn each half right side out and press.
4. With front RIGHT SIDES of stole together stitch the top side from one side seam to the other.
5. Turn stole so the inside back is up.
Fold lining seam allowance under so each side meets like a seam.
Overcast the edges together where they meet.
Press.

