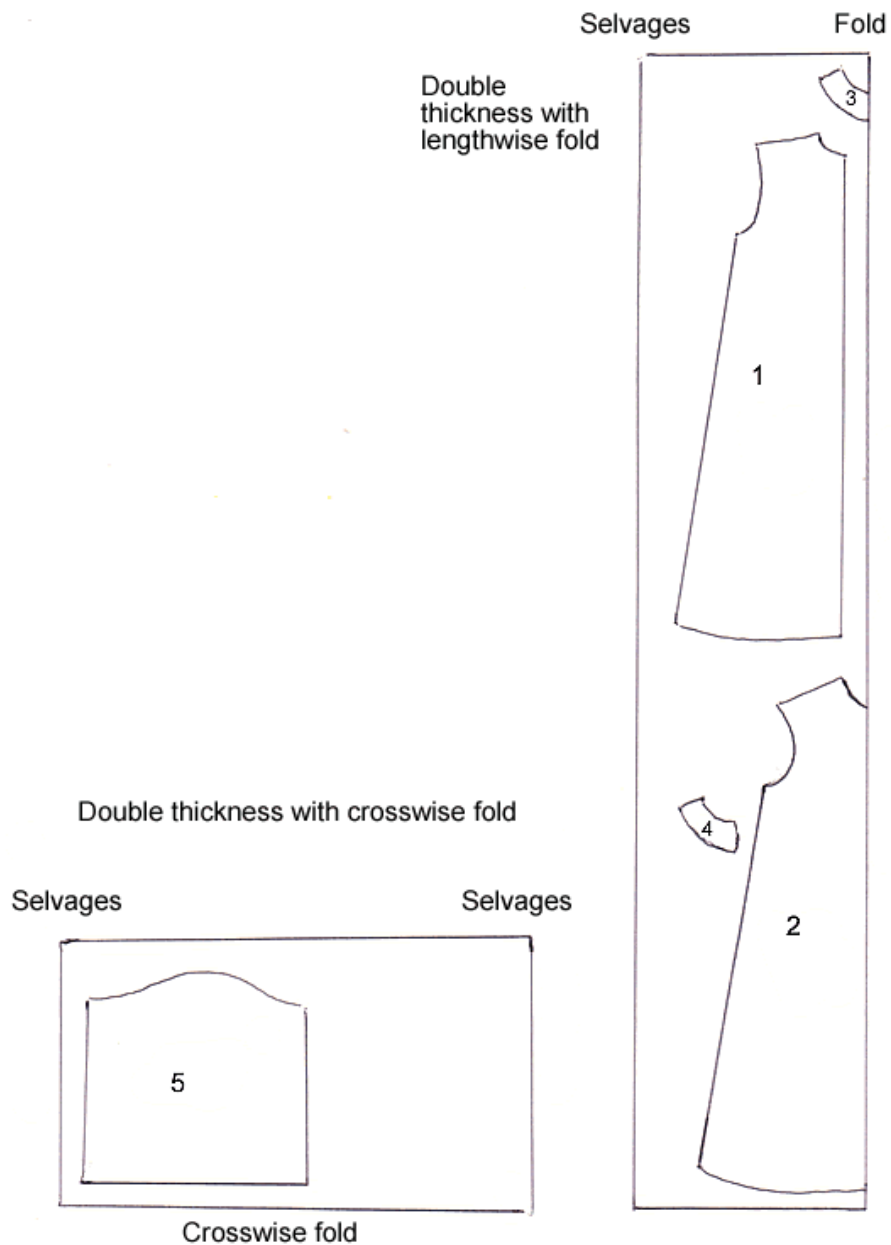


# ST. NICHOLAS COSTUME CUTTING LAYOUTS

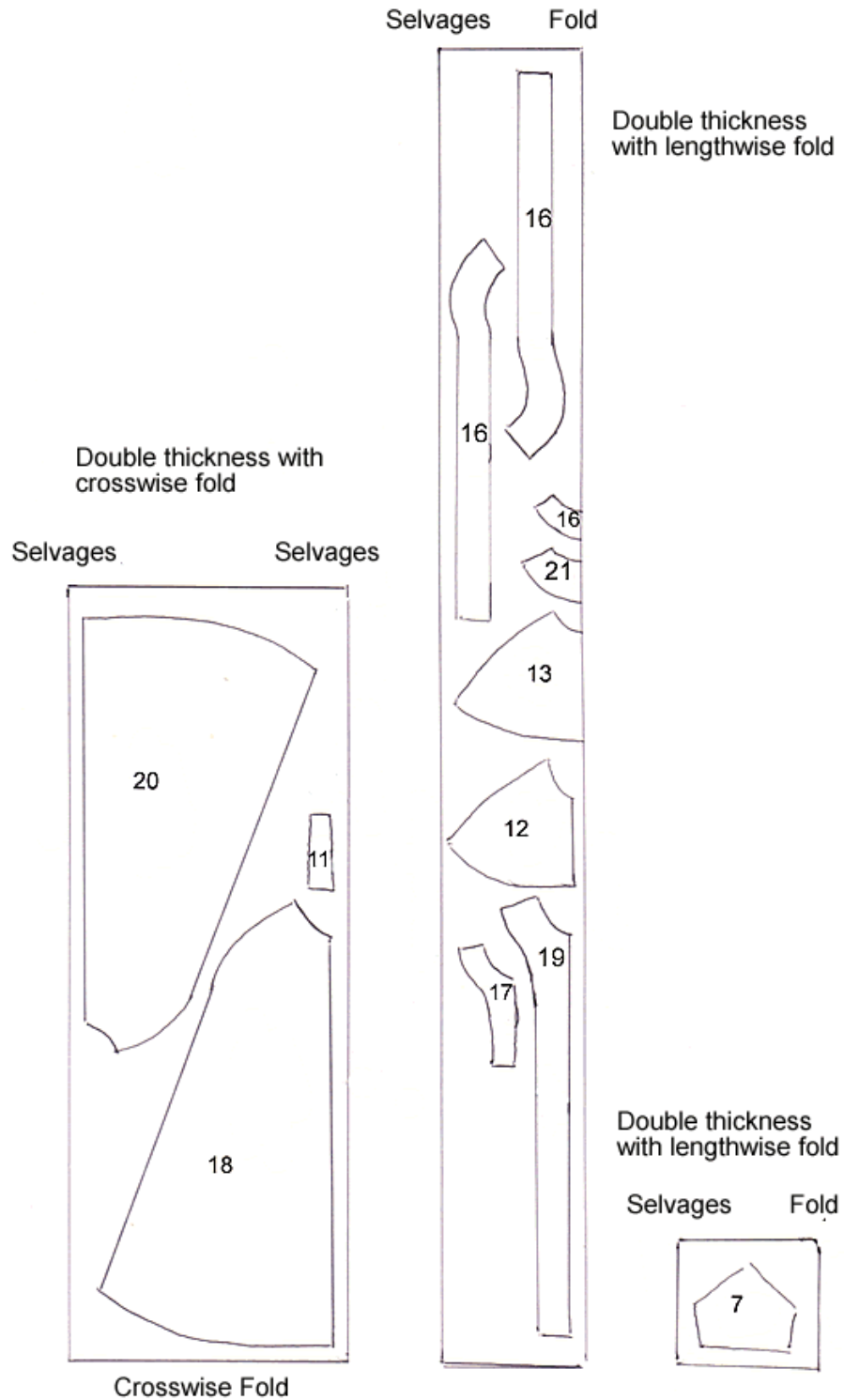
Three cutting layouts:     Alb  
                                  Cloak/cape, capelet, stole, miter  
                                  Lining for cloak/cape, capelet, miter  
*Interfacing also needs to be cut, layout not provided*

ALB CUTTING LAYOUT — 5 ½ YARDS



# ST. NICHOLAS COSTUME CUTTING LAYOUTS

CLOAK/CAPE, CAPELET, STOLE & MITER CUTTING LAYOUT — 9 3/4 YARDS

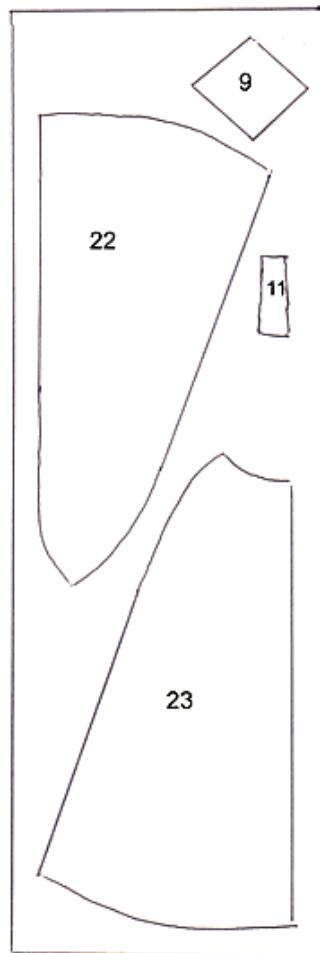


# ST. NICHOLAS COSTUME CUTTING LAYOUTS

LINING CUTTING LAYOUT FOR CLOAK/CAPE, CAPELET & MITER — 8 1/4 YARDS

Double thickness with  
crosswise fold

Selvages                      Selvages



Crosswise fold

Double thickness  
with lengthwise  
fold

Selvages                      Fold

